



STEP Collection

A P R I C O T



Size
300x1200mm

Surface
Matt

Thickness
09mm

STEP Collection

A stair riser is the near-vertical element in a set of stairs, forming the space between one step and the next. It is sometimes slightly inclined from the vertical so that its top is closer than its base to the person climbing the stairs.



**BULL NOSE
MOULDING**



SANDWICH



**GROOVE WITH
EPOXY FILLING**

A P R I C O T



APRICOT

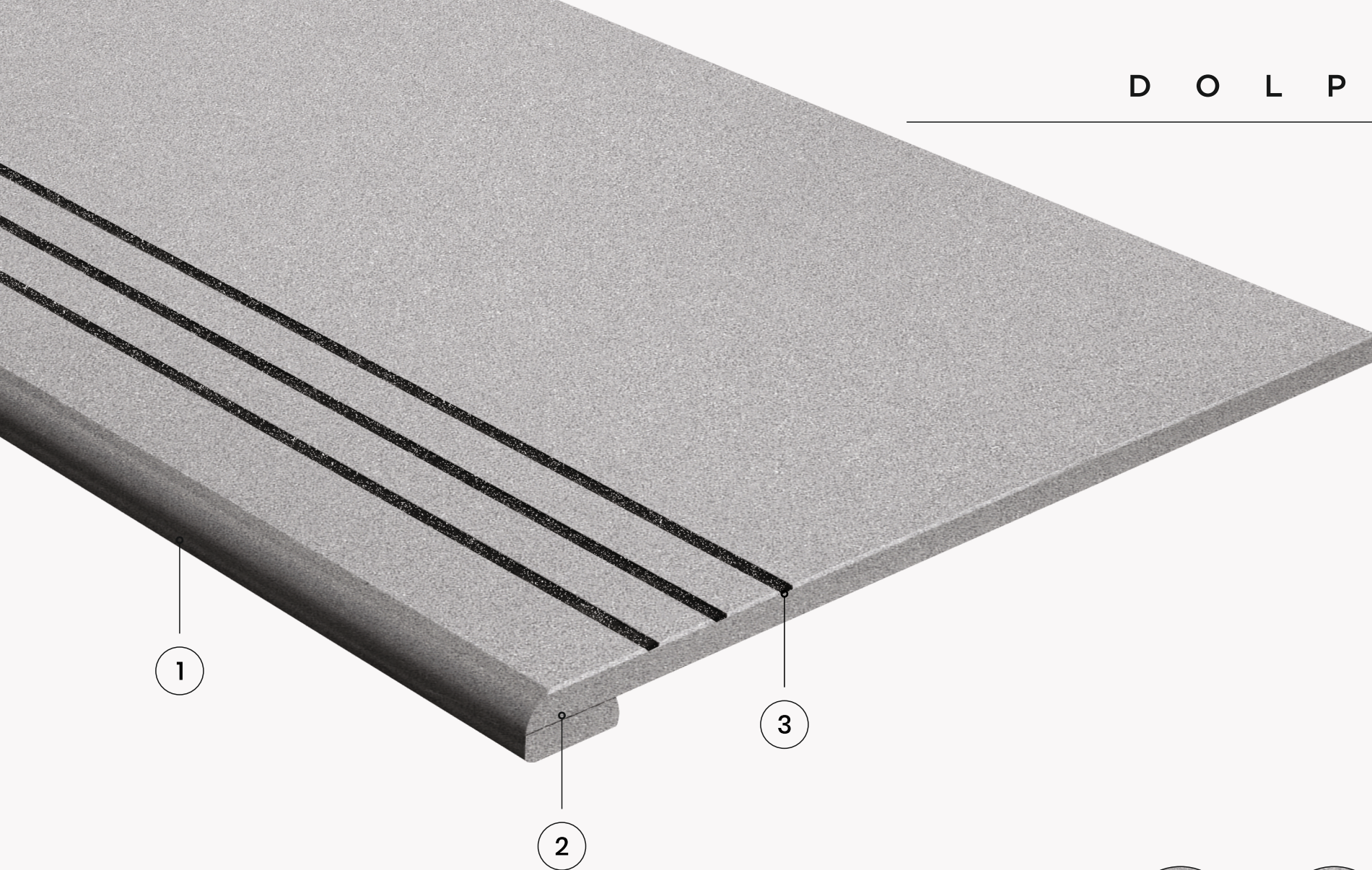
300x1200mm





A P R I C O T

D O L P H I N



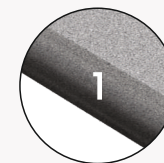
Size
300x1200mm

Surface
Matt

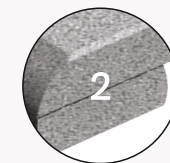
Thickness
09mm

STEP Collection

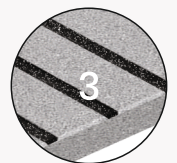
A stair riser is the near-vertical element in a set of stairs, forming the space between one step and the next. It is sometimes slightly inclined from the vertical so that its top is closer than its base to the person climbing the stairs.



1
BULL NOSE
MOULDING

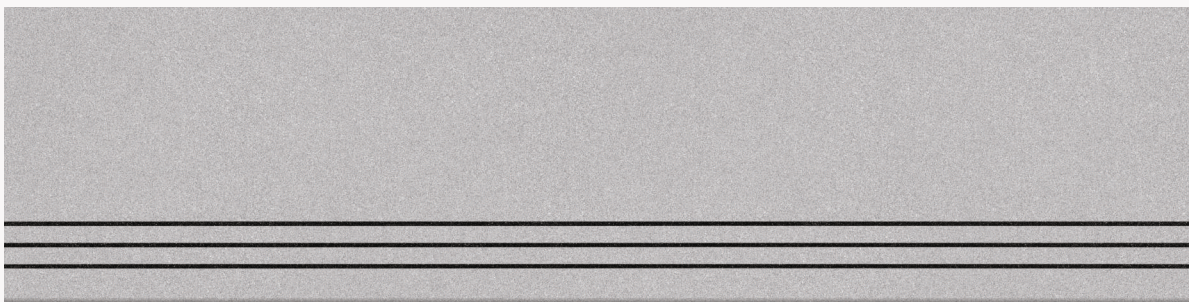


2
SANDWICH



3
GROOVE WITH
EPOXY FILLING

D O L P H I N



DOLPHIN

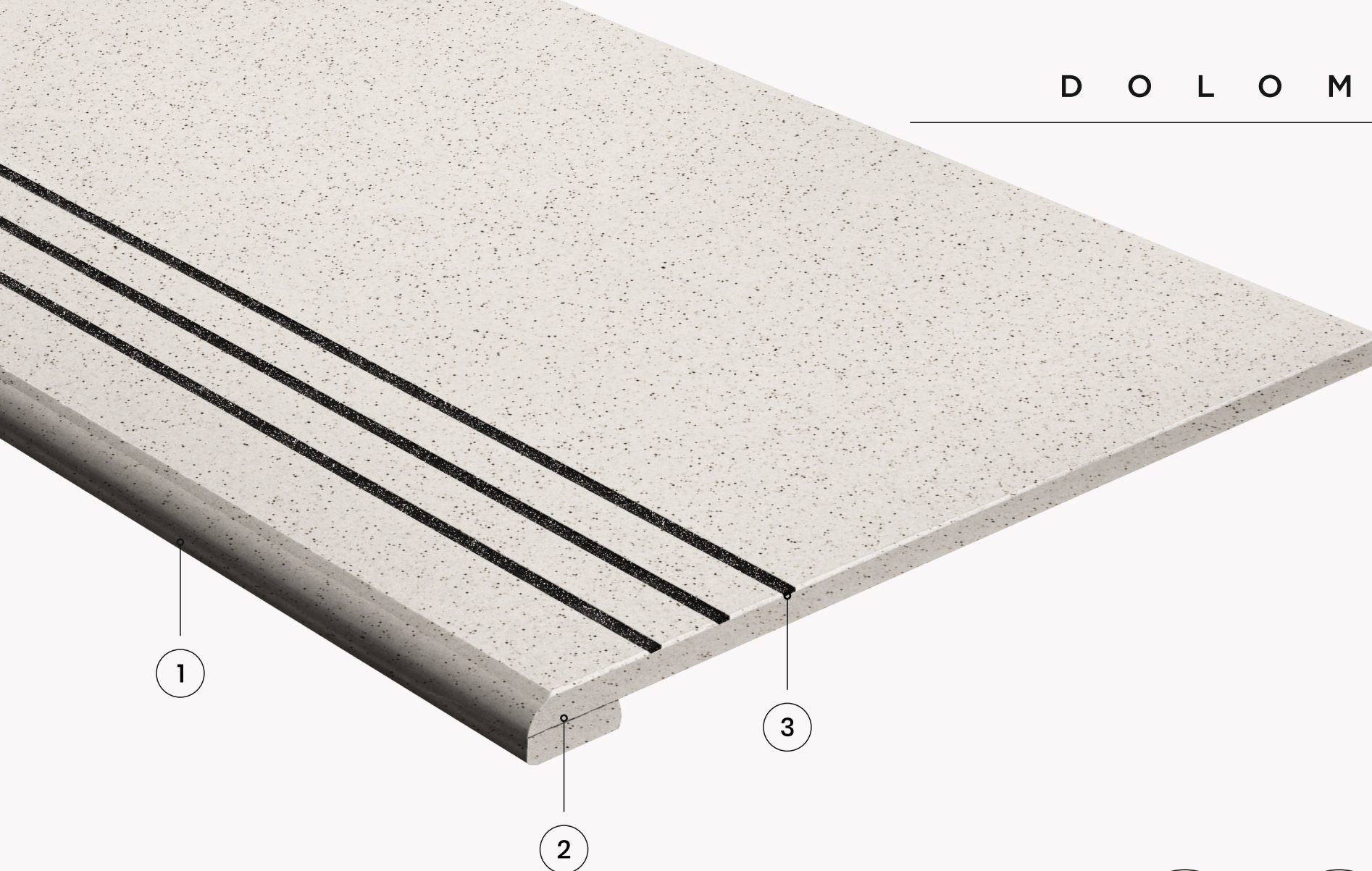
300x1200mm





D O L P H I N

D O L O M I N E



Size
300x1200mm

Surface
Matt

Thickness
09mm



**BULL NOSE
MOULDING**



SANDWICH



**GROOVE WITH
EPOXY FILLING**

STEP Collection

A stair riser is the near-vertical element in a set of stairs, forming the space between one step and the next. It is sometimes slightly inclined from the vertical so that its top is closer than its base to the person climbing the stairs.

D O L O M I N E



DOLOMINE

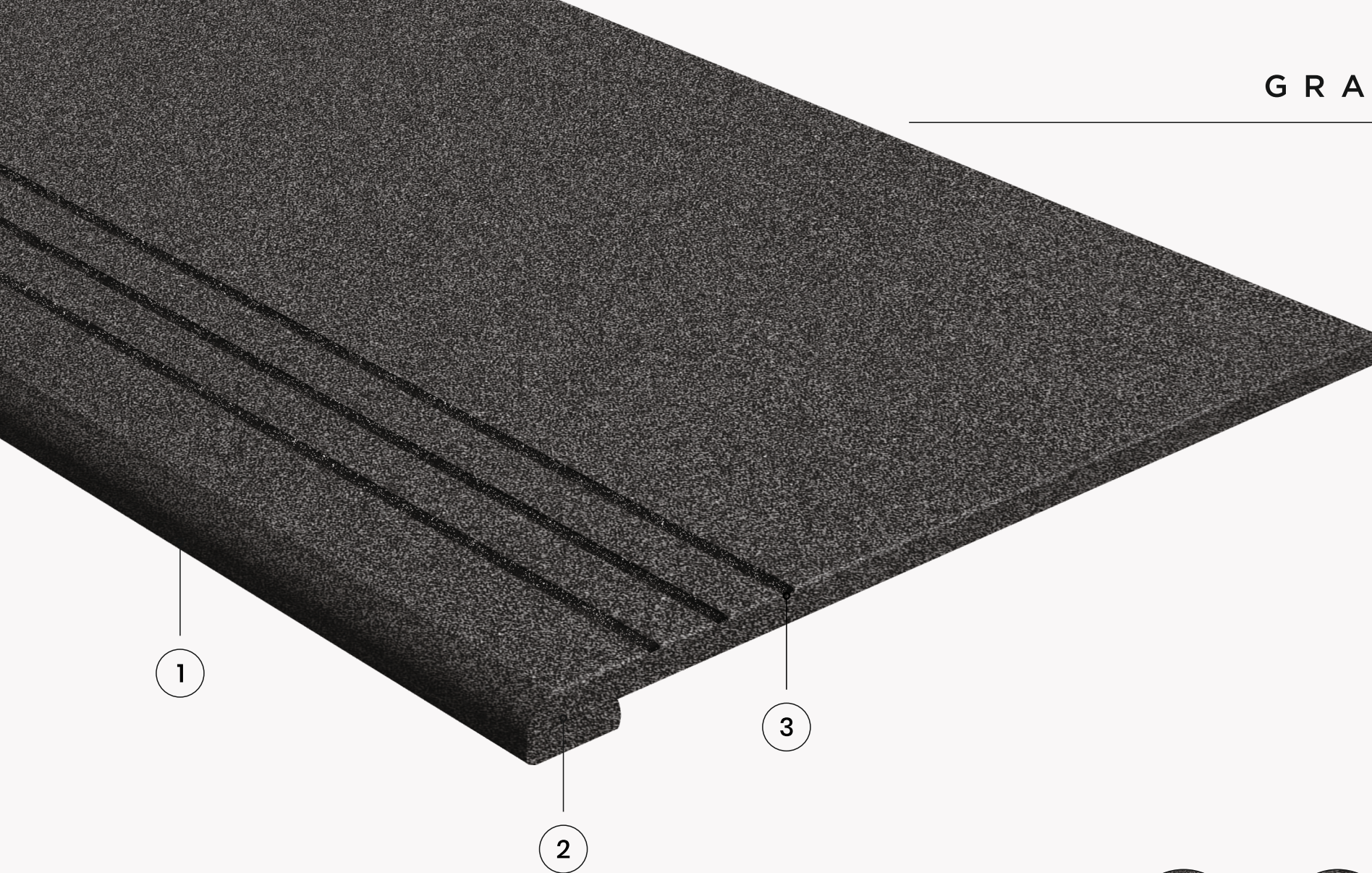
300x1200mm





D O L O M I N E

GRAPHITE



Size
300x1200mm

Surface
Matt

Thickness
09mm

1

2

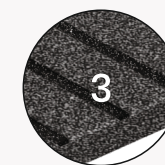
3



**BULL NOSE
MOULDING**



SANDWICH



**GROOVE WITH
EPOXY FILLING**

STEP Collection

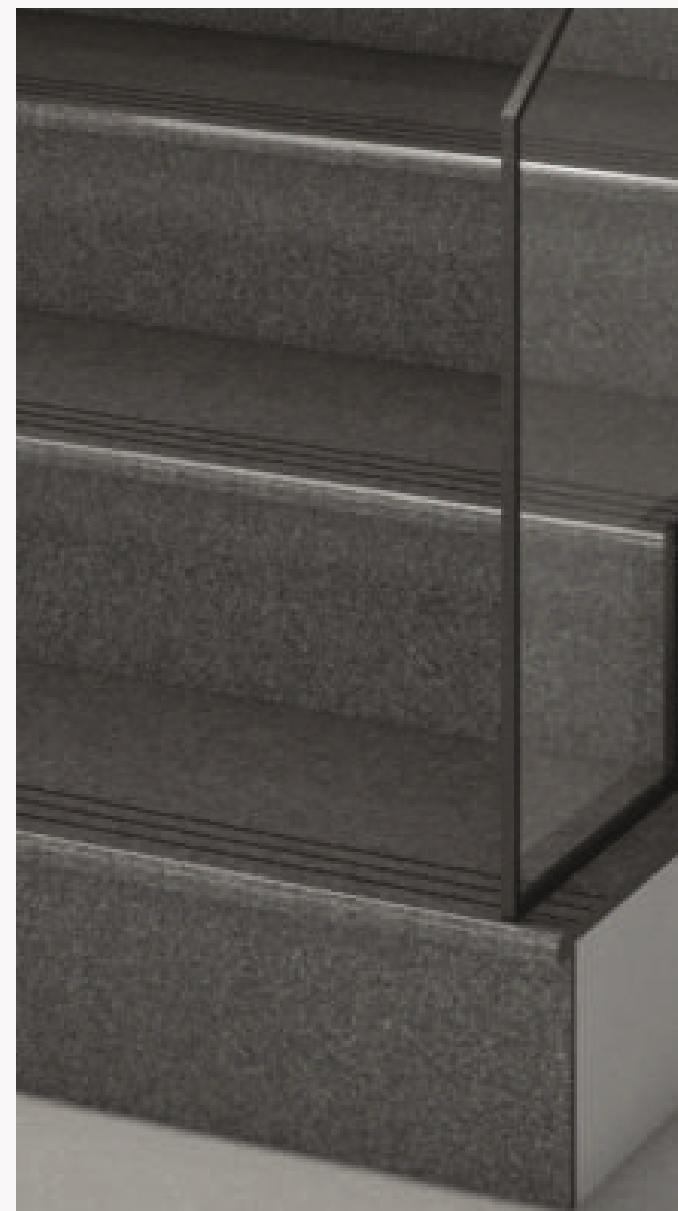
A stair riser is the near-vertical element in a set of stairs, forming the space between one step and the next. It is sometimes slightly inclined from the vertical so that its top is closer than its base to the person climbing the stairs.

G R A P H I T E



GRAPHITE

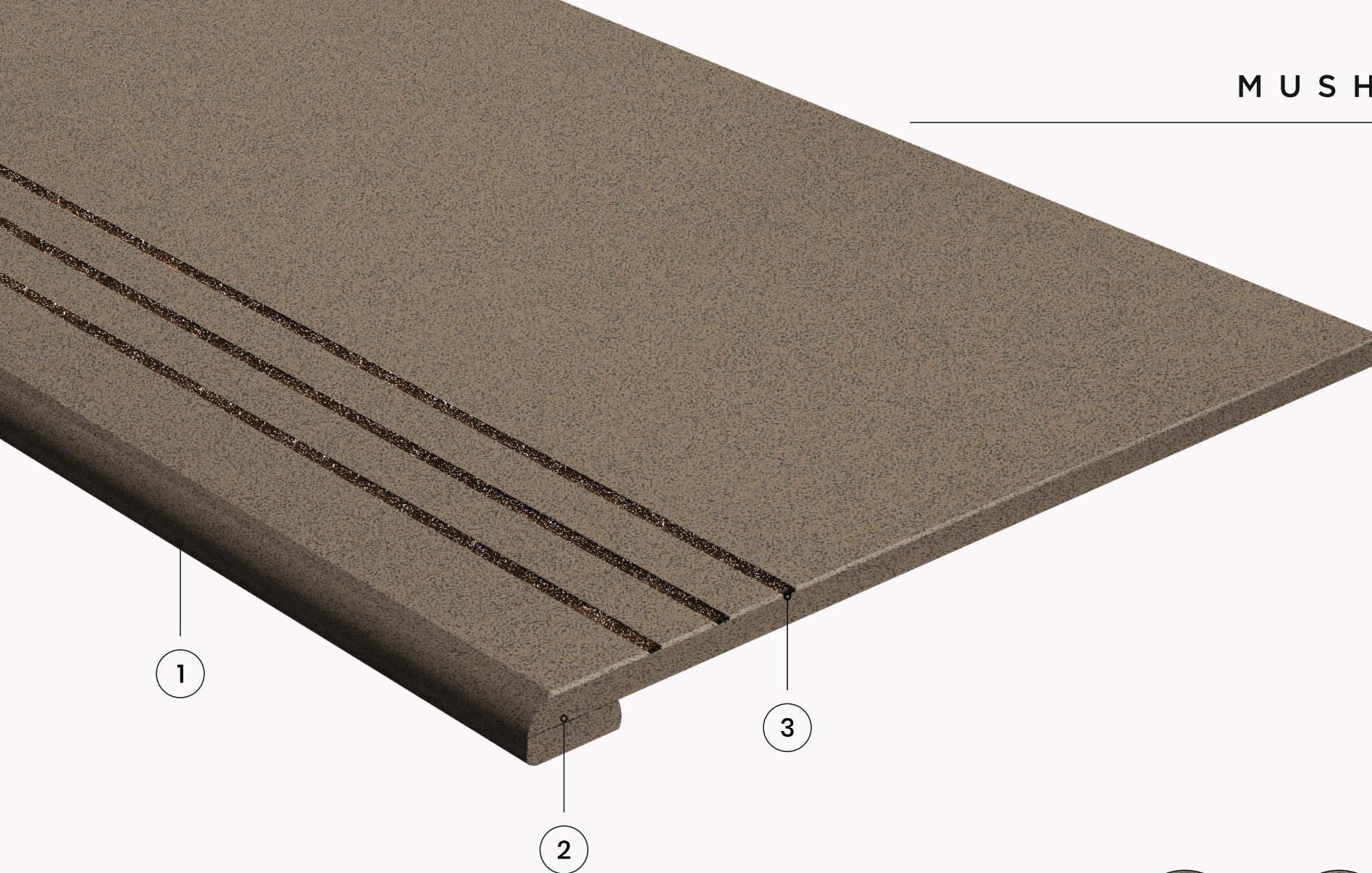
300x1200mm





G R A P H I T E

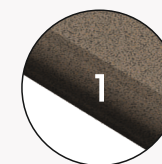
M U S H R O O M



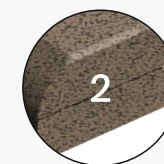
Size
300x1200mm

Surface
Matt

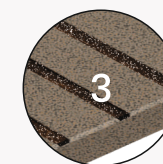
Thickness
09mm



**BULL NOSE
MOULDING**



SANDWICH

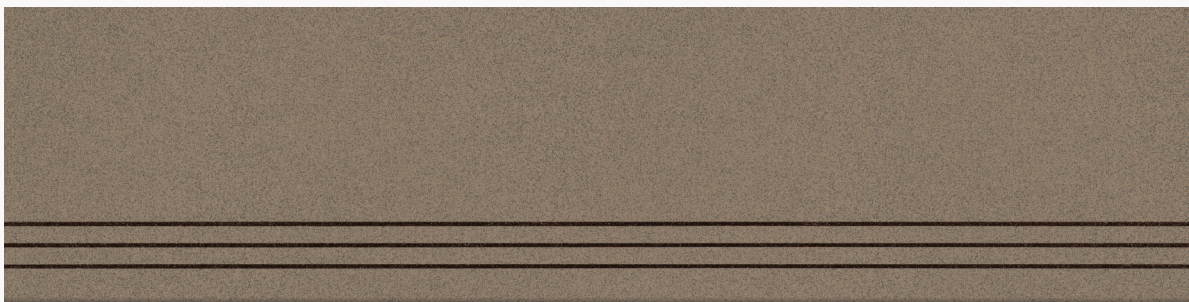


**GROOVE WITH
EPOXY FILLING**

STEP Collection

A stair riser is the near-vertical element in a set of stairs, forming the space between one step and the next. It is sometimes slightly inclined from the vertical so that its top is closer than its base to the person climbing the stairs.

M U S H R O O M



MUSHROOM

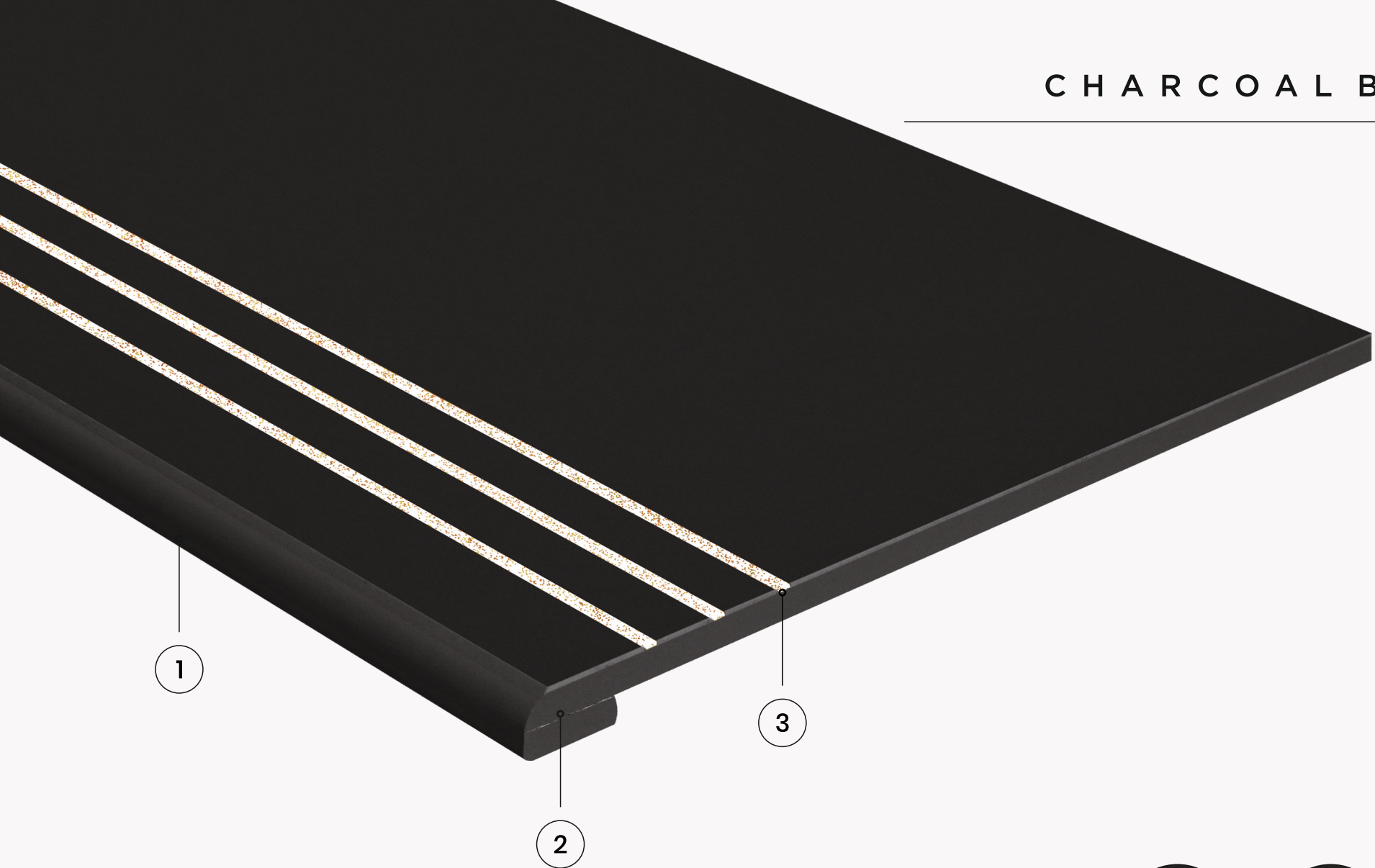
300x1200mm





M U S H R O O M

CHARCOAL BLACK



Size
300x1200mm

Surface
Matt

Thickness
09mm



A stair riser is the near-vertical element in a set of stairs, forming the space between one step and the next. It is sometimes slightly inclined from the vertical so that its top is closer than its base to the person climbing the stairs.



**BULL NOSE
MOULDING**



SANDWICH



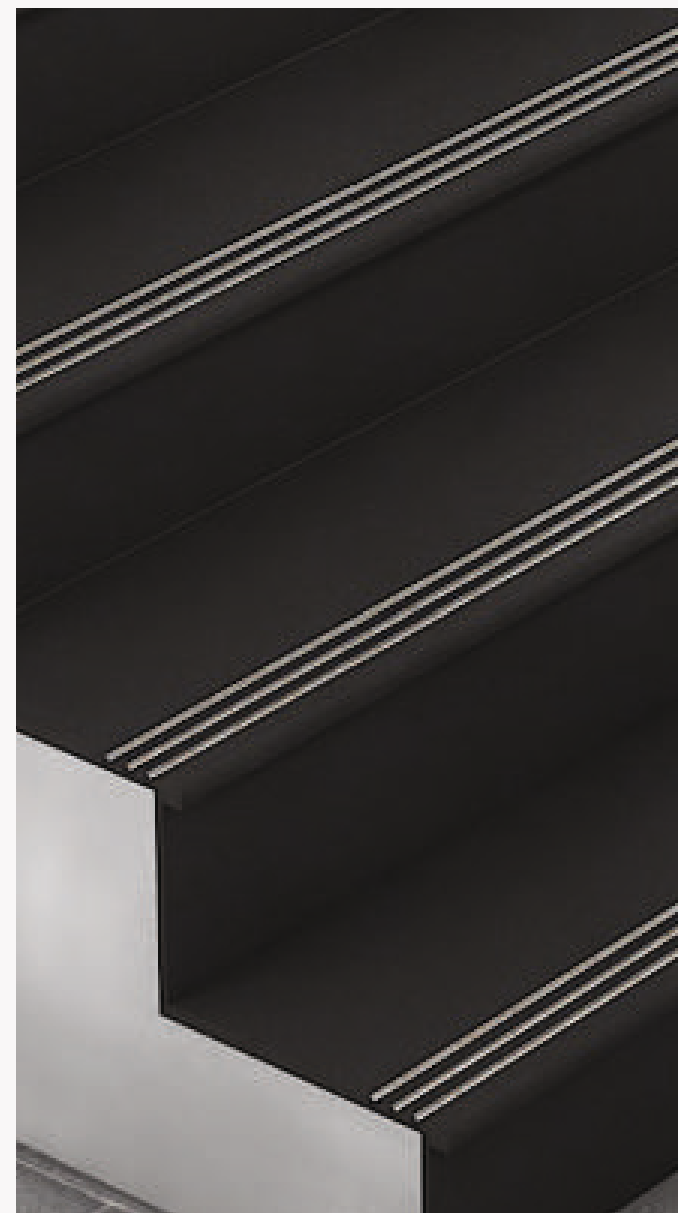
**GROOVE WITH
EPOXY FILLING**

C H A R C O A L B L A C K



CHARCOAL BLACK

300x1200mm





C H A R C O A L B L A C K

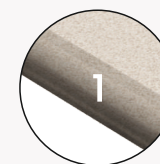
B U T T E R



Size
300x1200mm

Surface
Matt

Thickness
09mm



**BULL NOSE
MOULDING**



SANDWICH



**GROOVE WITH
EPOXY FILLING**

STEP Collection

A stair riser is the near-vertical element in a set of stairs, forming the space between one step and the next. It is sometimes slightly inclined from the vertical so that its top is closer than its base to the person climbing the stairs.

B U T T E R



BUTTER

300x1200mm





B U T T E R

B O U R B O N



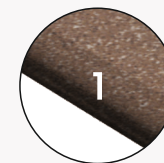
Size
300x1200mm

Surface
Matt

Thickness
09mm

STEP Collection

A stair riser is the near-vertical element in a set of stairs, forming the space between one step and the next. It is sometimes slightly inclined from the vertical so that its top is closer than its base to the person climbing the stairs.



**BULL NOSE
MOULDING**



SANDWICH



**GROOVE WITH
EPOXY FILLING**

B O U R B O N



BOURBON

300x1200mm





B O U R B O N

